

Пользователь / Username	puhra
Дата / Date	14.07.2020 00:04:16
Имя файла / Filename	Размер 50 окружность груди 116 см, талия 98 см, бедра 122 см
Формат / Format	A4
Кол-во листов / Pages	28



## **ВАЖНО**

При печати этого PDF файла «Масштабирование страницы» или «Page scaling» должно быть равно «Нет» или «No»

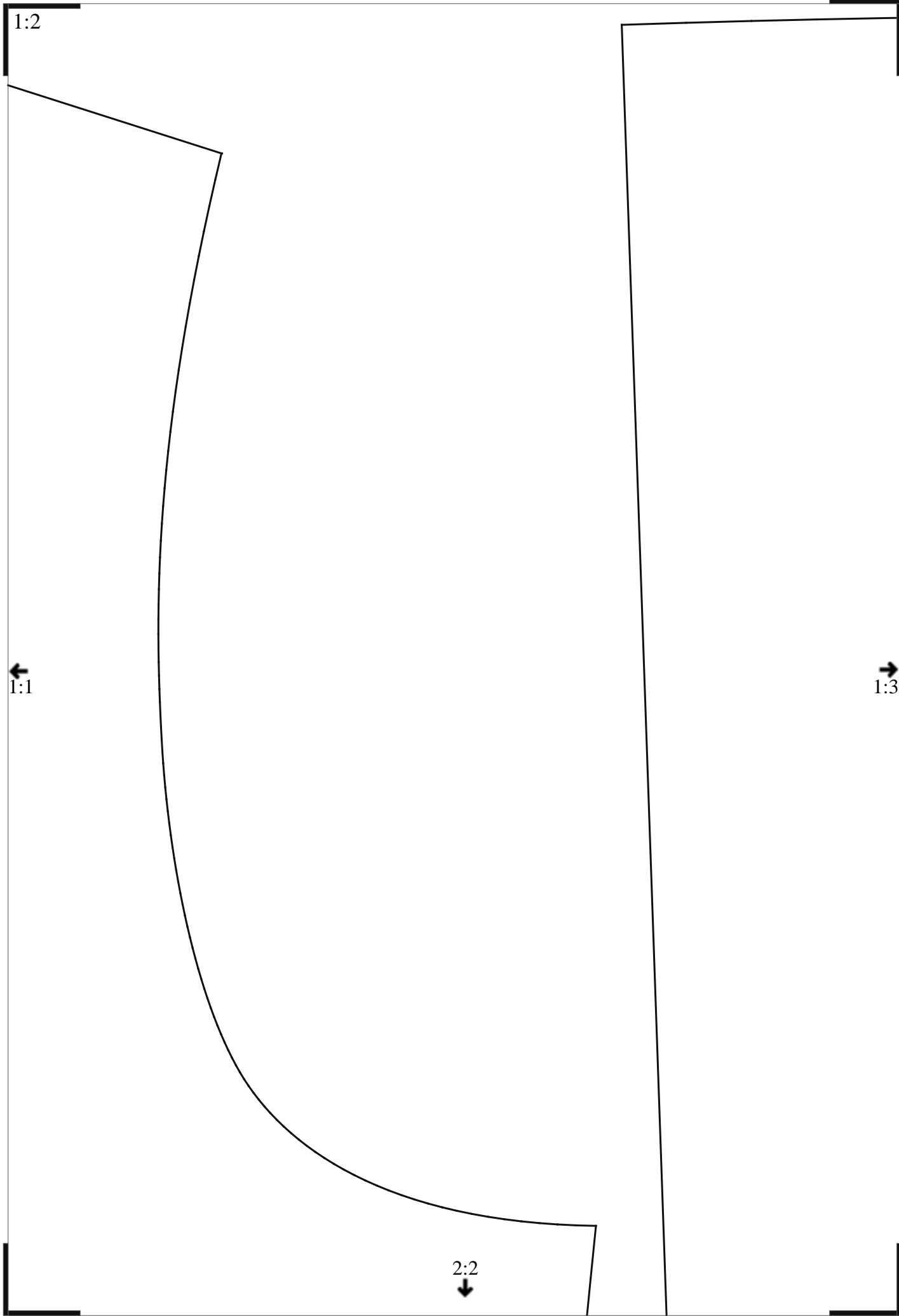
Печать производите в «Истинный размер» или «Actual size»

Подробнее смотрите в разделе «Помощь» - «Печать PDF файлов»

This is a technical architectural drawing of a building facade. The drawing is oriented horizontally on the page. It features a large, rectangular window on the left side, with a vertical line indicating a hinge or a structural break. To the right of the window is a large, blank rectangular area, likely representing a wall or a section of the building. Above the window and wall, a curved line represents the roofline, which slopes upwards from left to right. The drawing is enclosed in a simple rectangular border. In the bottom right corner, there is a small arrow pointing right, labeled '1:2', indicating a scale or a specific view. In the bottom left corner, there is a small arrow pointing left, labeled '2:1', indicating a scale or a specific view. The text 'АТНБЕ ВЪКРОЙКИ МІРПІА.СМ' is written vertically along the right edge of the drawing, likely indicating the name of the building or the project.

This is a technical architectural drawing of a building facade. The drawing is oriented horizontally on the page. It features a large, rectangular window on the left side, with a vertical line indicating a hinge or a break. To the right of the window is a large, curved wall that forms the main part of the facade. The roofline is shown as a series of connected curves, starting from the top left, curving down to the window, then up and over the main wall, and finally curving down to the right. The drawing is labeled with '1:1' in the top left corner, indicating the scale. In the bottom right corner, there is a label '1:2' with an arrow pointing towards the right, likely indicating a section or a different view. The drawing is a black and white line drawing, typical of architectural plans.

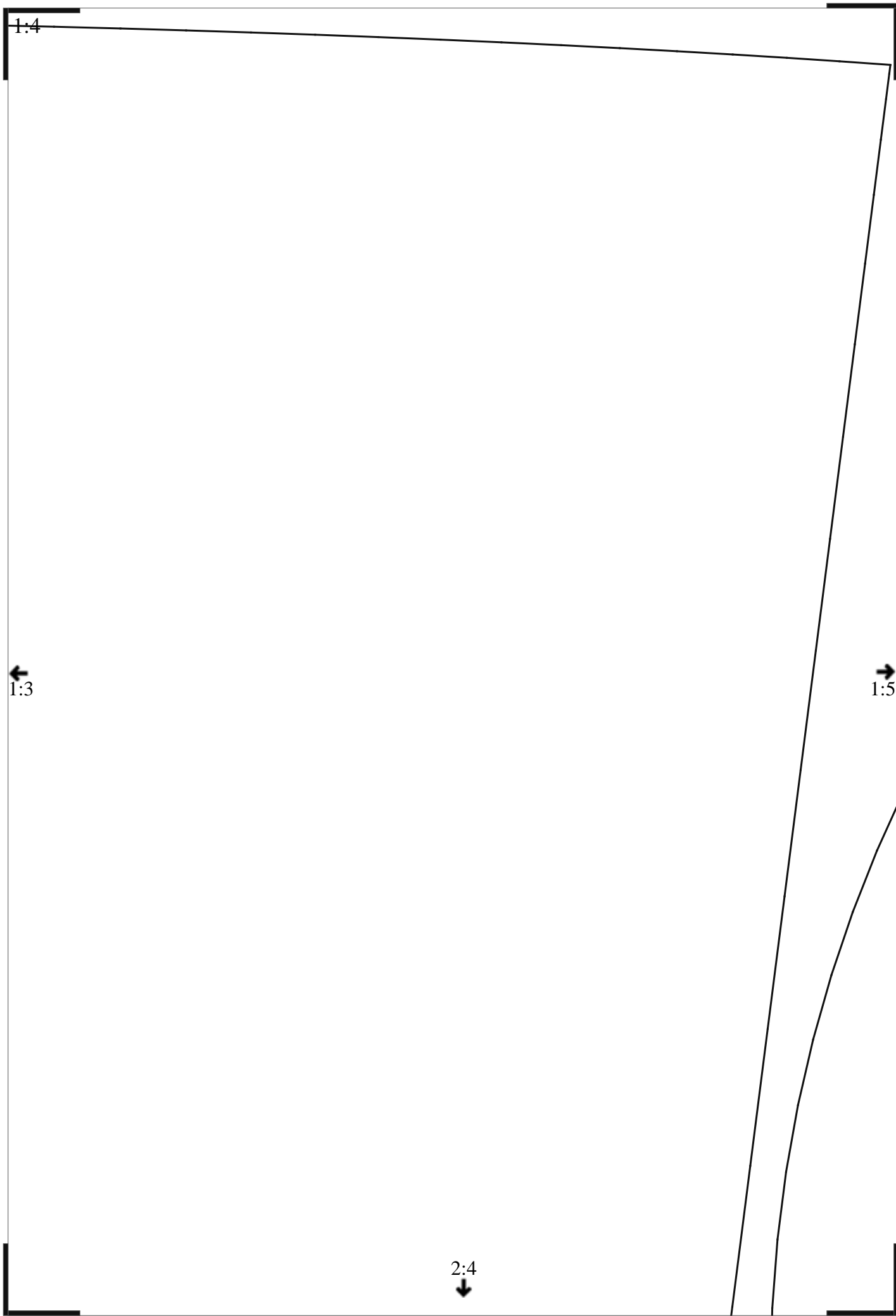
This is a technical architectural drawing of a building facade. The drawing is oriented horizontally on the page. It features a large, rectangular window on the left side, with a vertical line indicating a hinge or a break. To the right of the window is a large, curved wall that forms the main part of the facade. The roofline is shown as a series of connected curves, starting from the top left, curving down to the window, then up and over the main wall, and finally curving down to the right. The drawing is labeled with '1:1' in the top left corner, indicating the scale. In the bottom right corner, there is a label '1:2' with an arrow pointing towards the right, likely indicating a section or a different view. The drawing is a black and white line drawing, typical of architectural plans.



1:3

←  
1:2

→  
1:4



1:5

←  
1:4

→  
1:6

↓  
2:5

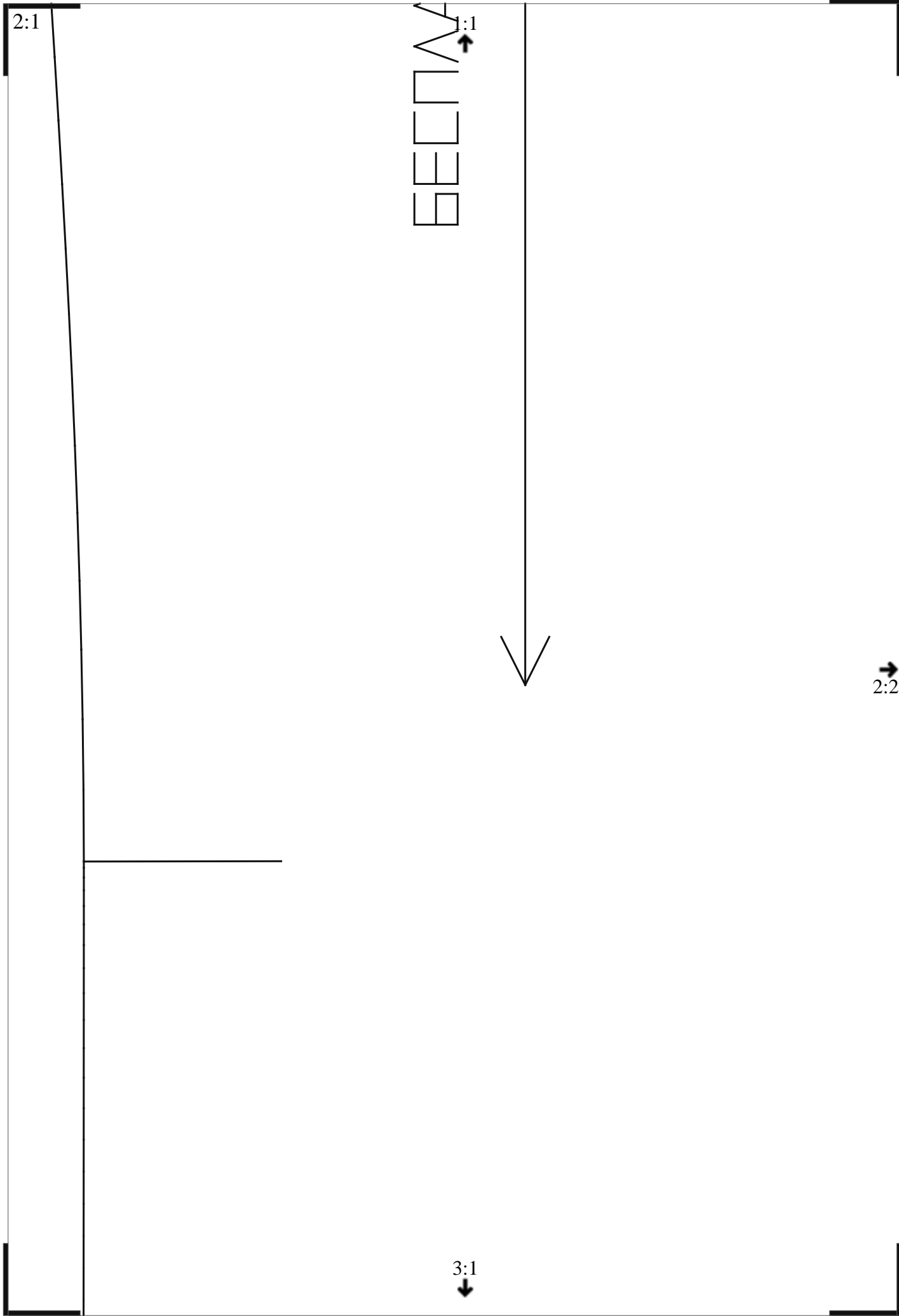
БЕСПАТНЬЕ ВЪКРОЙКИ МІРПА

1:6

TR.COM

←  
1:5

2:6  
↓



2:1

SECTION

1:1

2:2

3:1



2:2

1:2

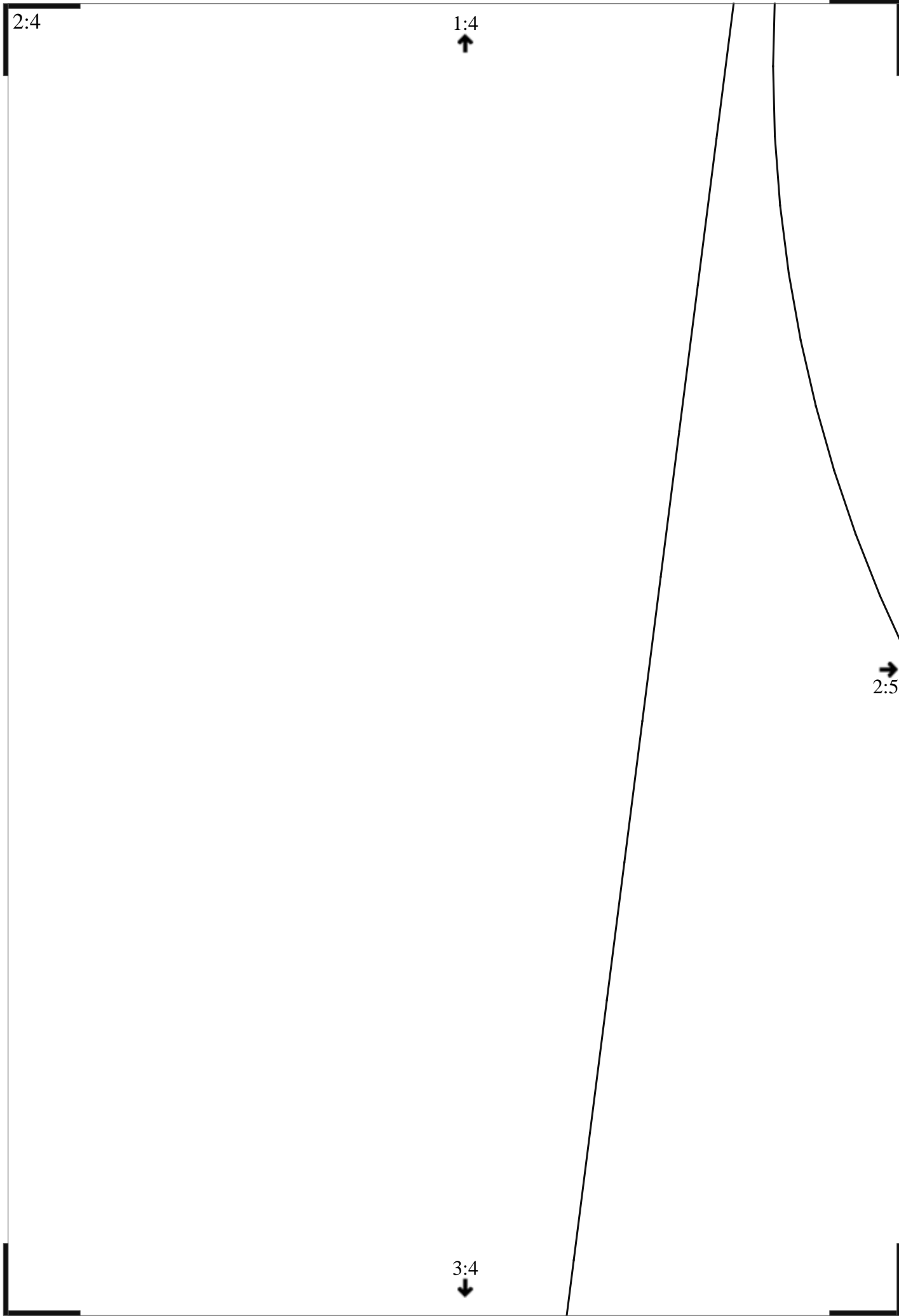


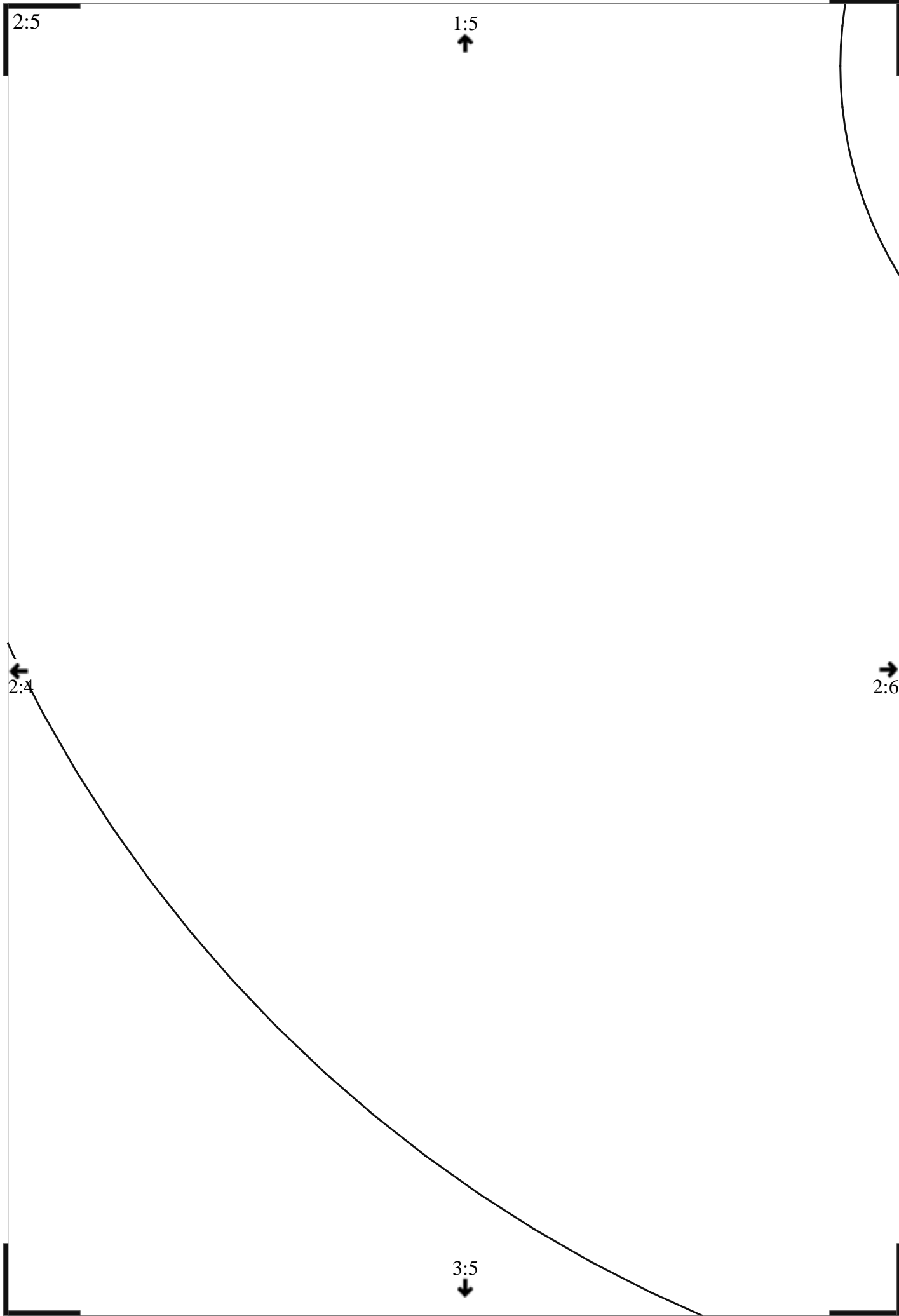
2:1

3:2



СЕРЕДИНА





2:5

1:5  
↑

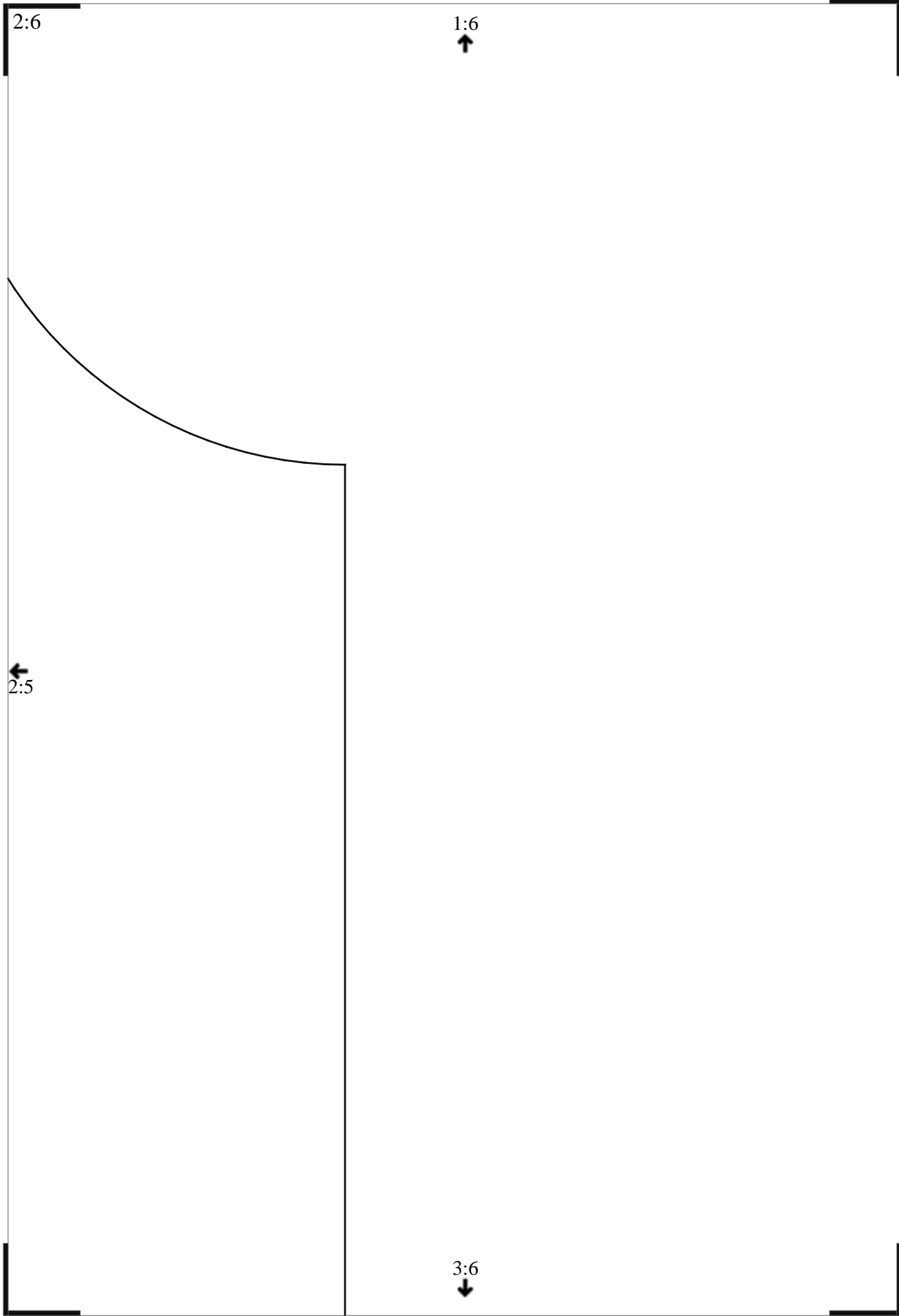


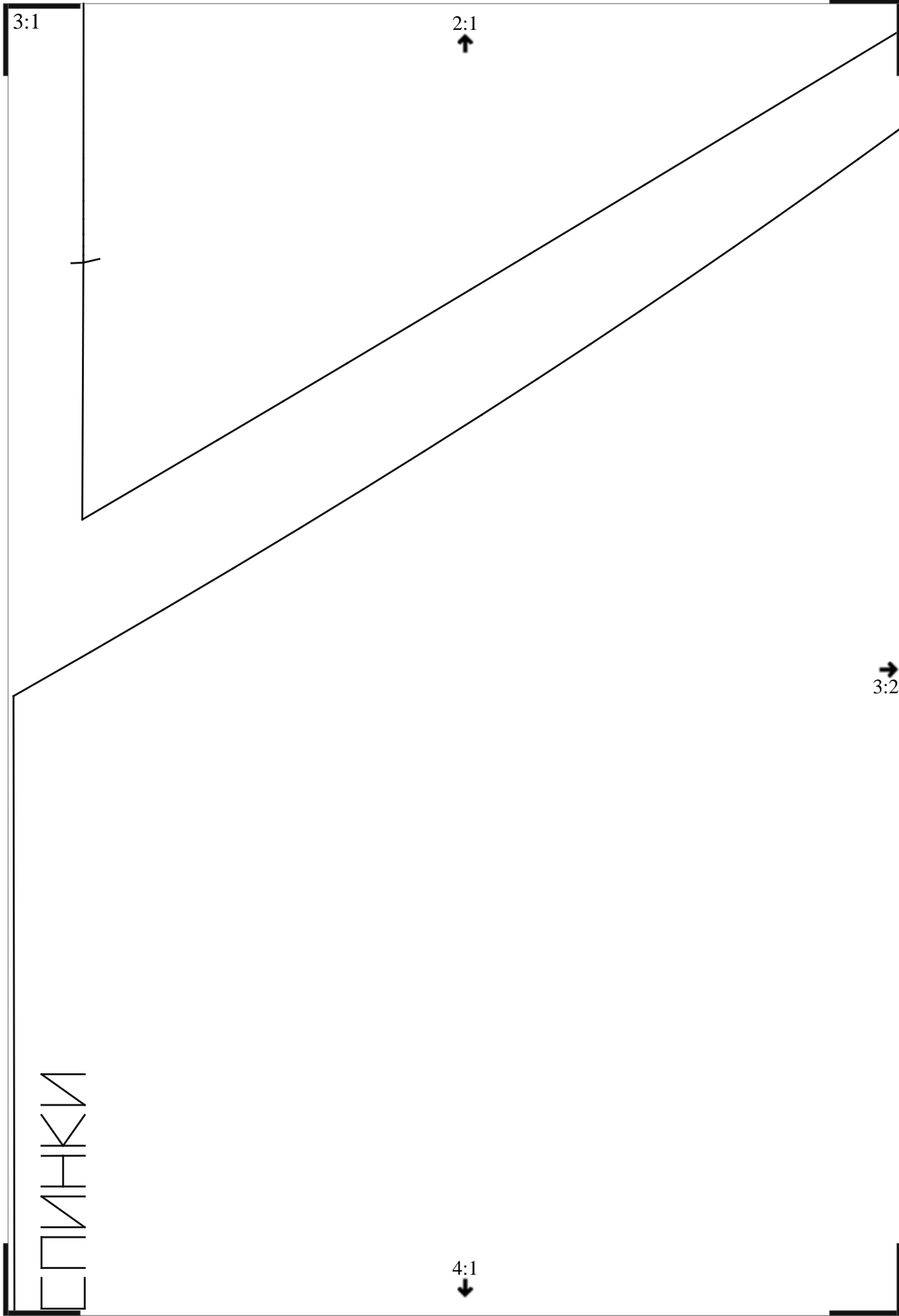
2:4  
←

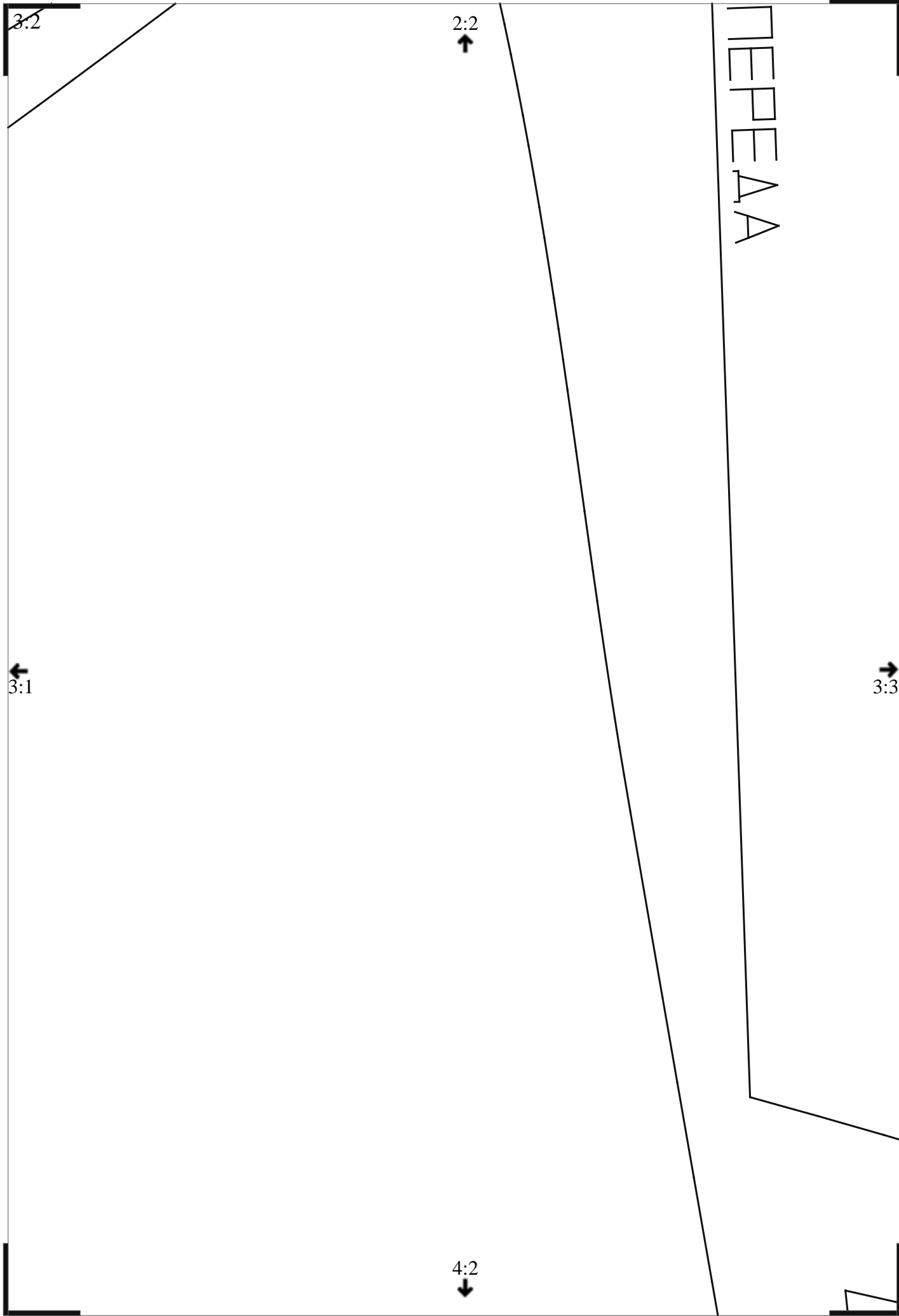
2:6  
→

3:5  
↓







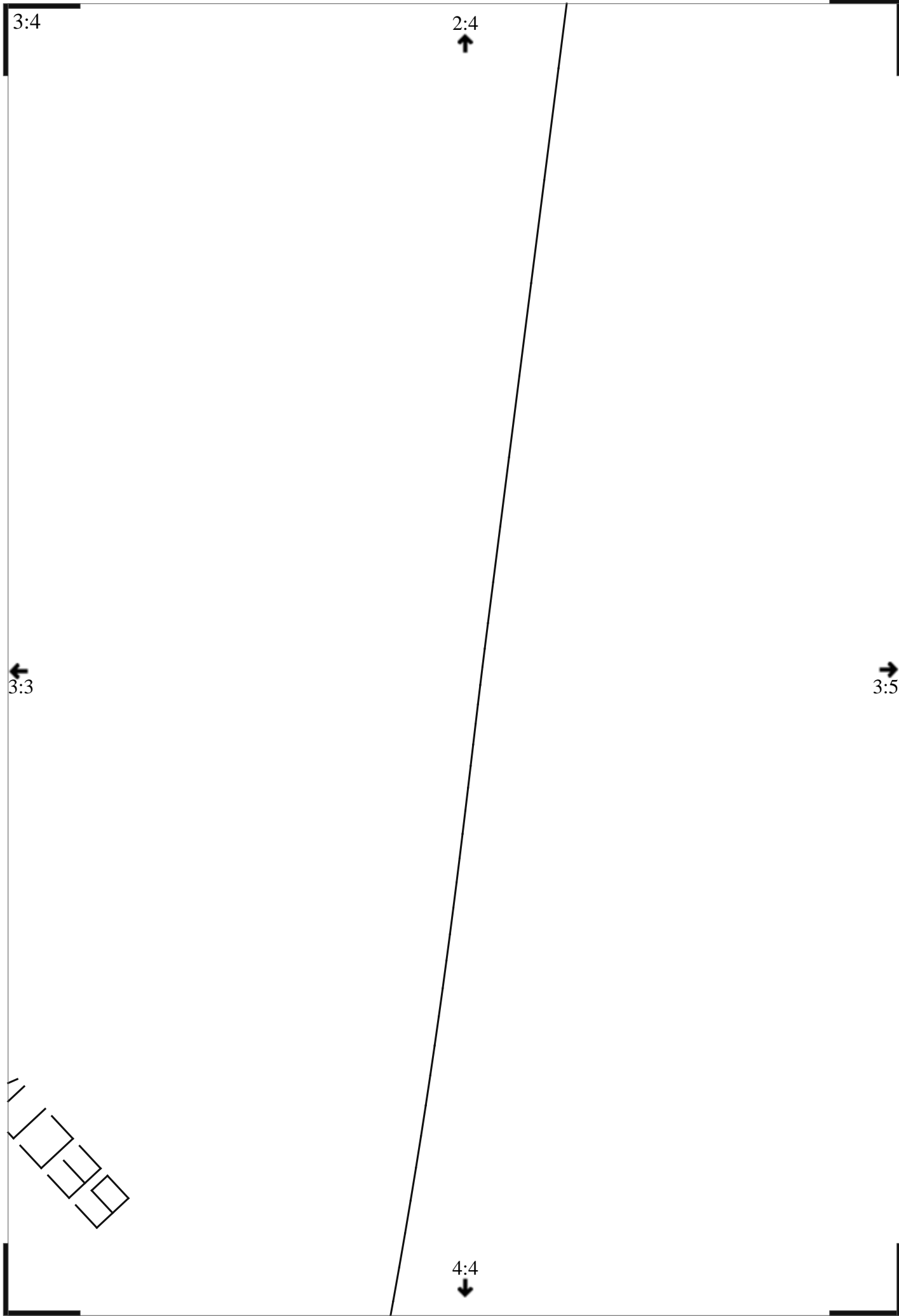


3:3

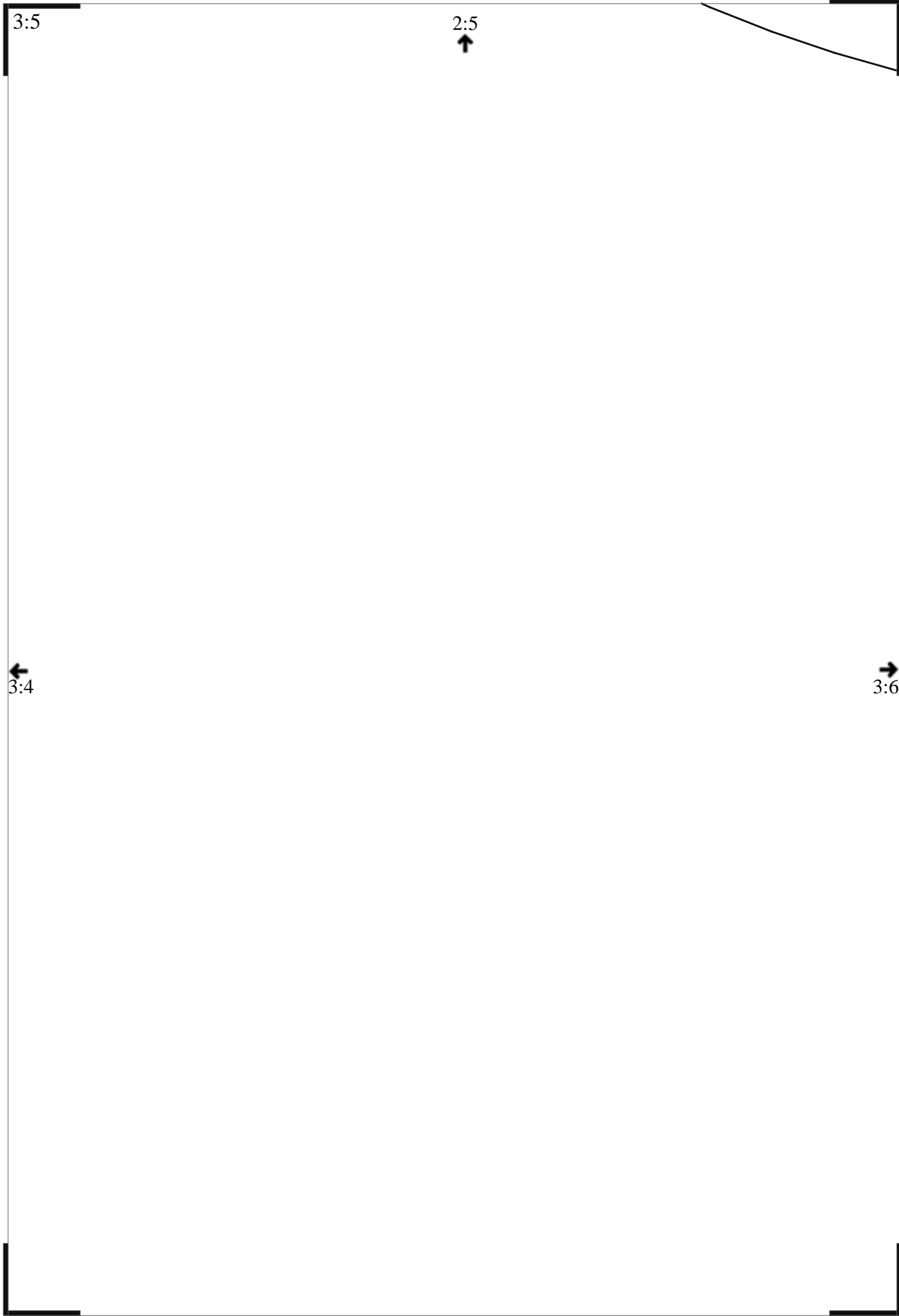
←  
3:2

→  
3:4

4:3  
↓







3:6

2:6



3:5

4:1

СЕРЕДИНА

ВЫКРОЙКИ MIRPIAR.COM

3:1

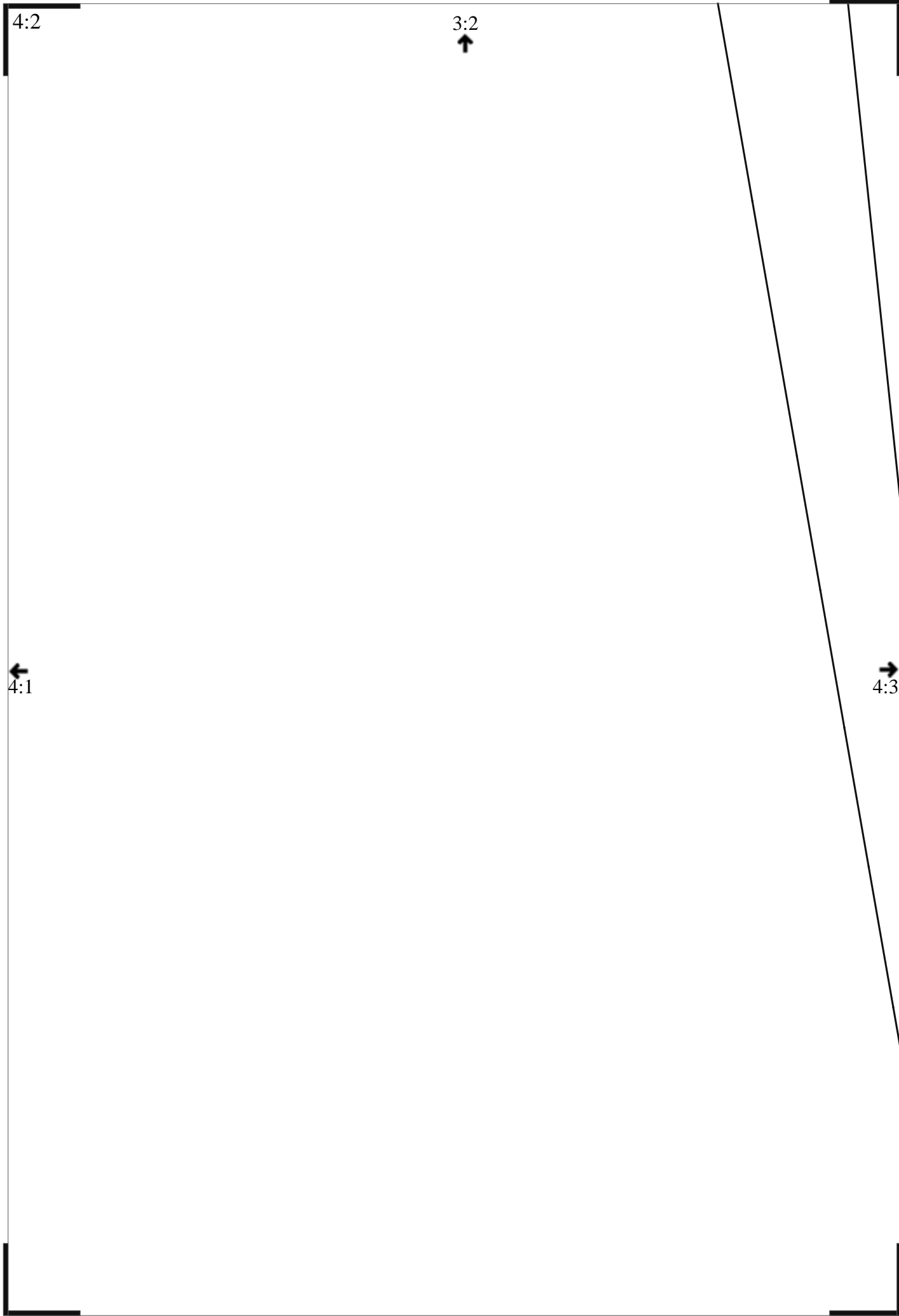


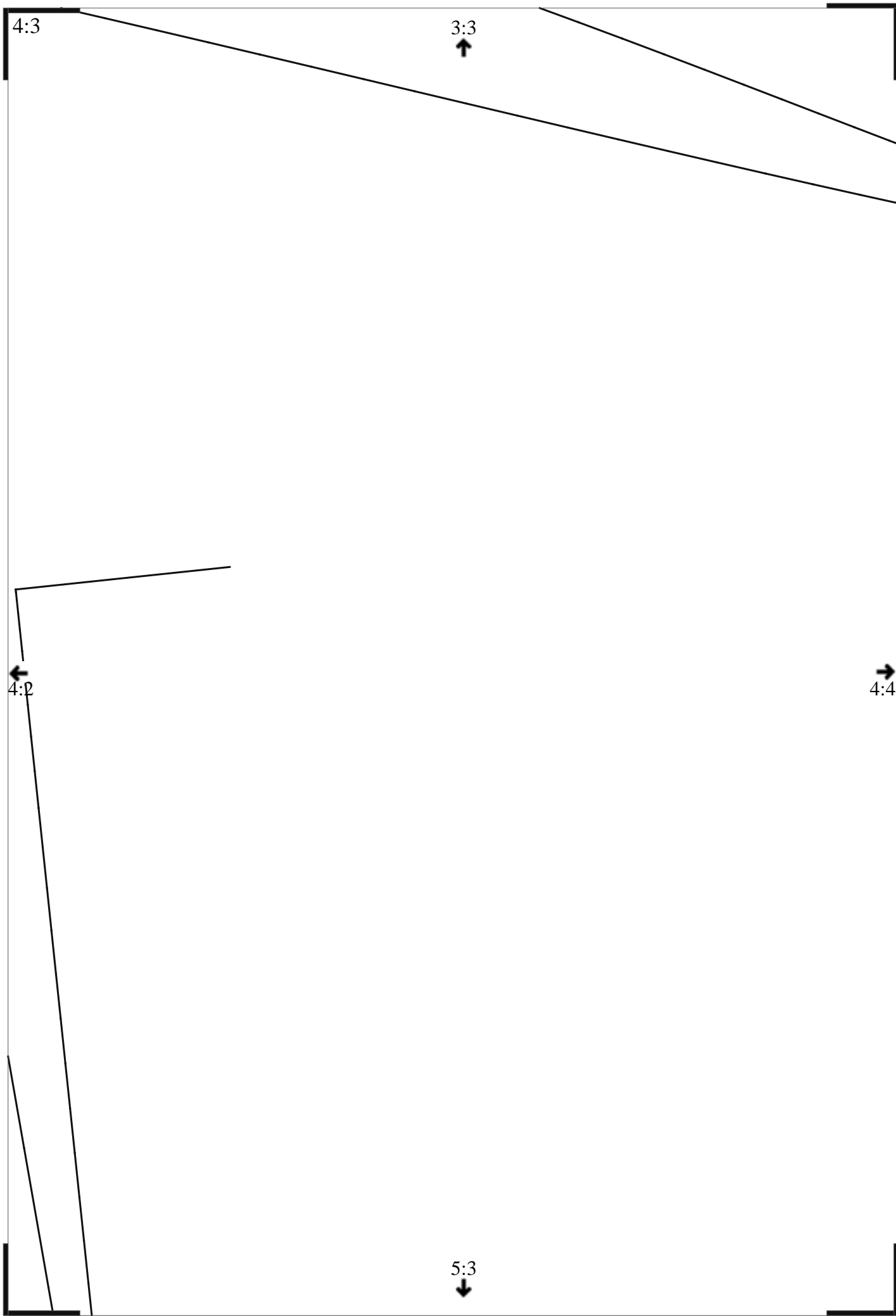
4:2

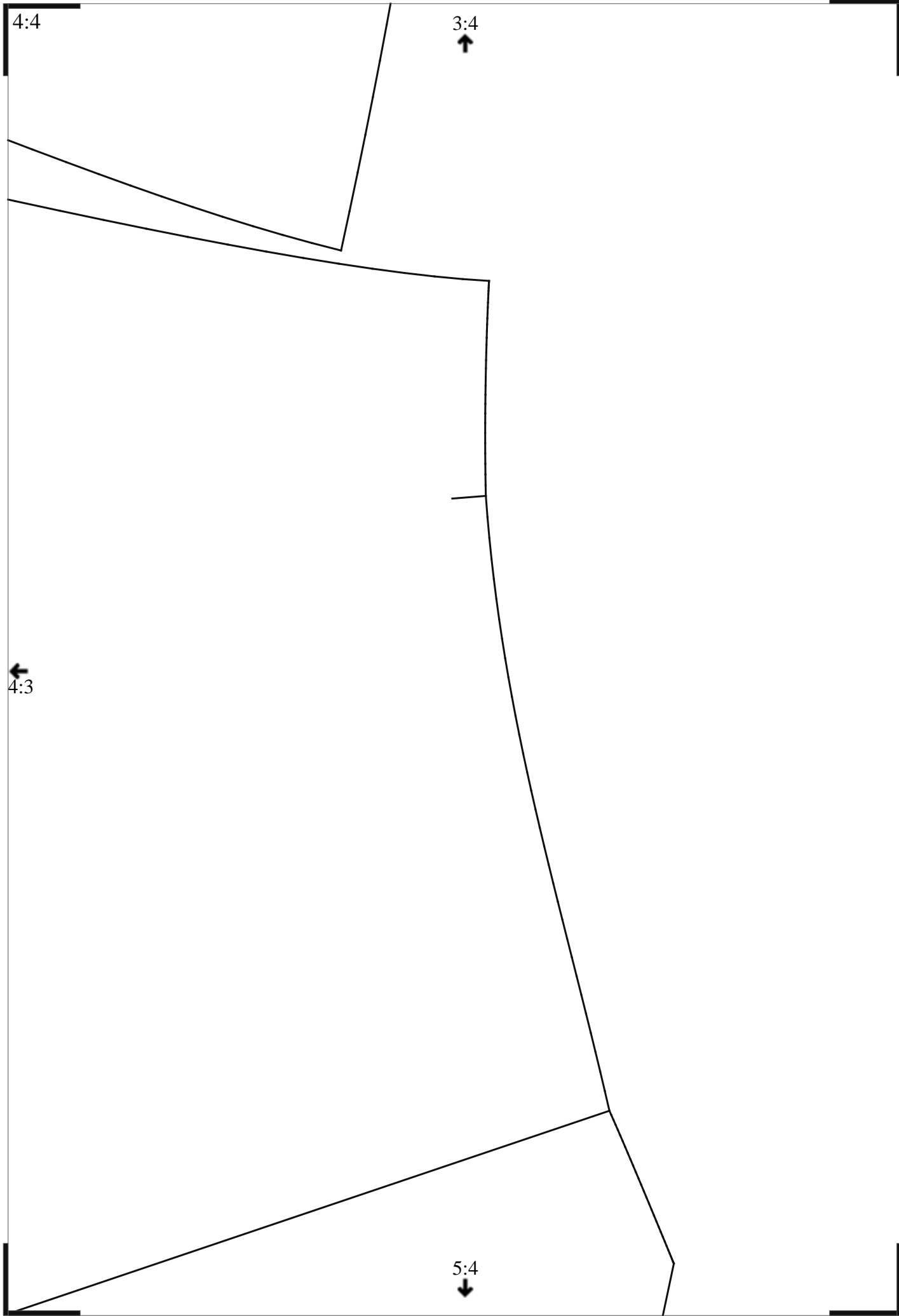


5:1









5:1

БЕCPΛATHYB

4:1  
↑

6:1  
↓

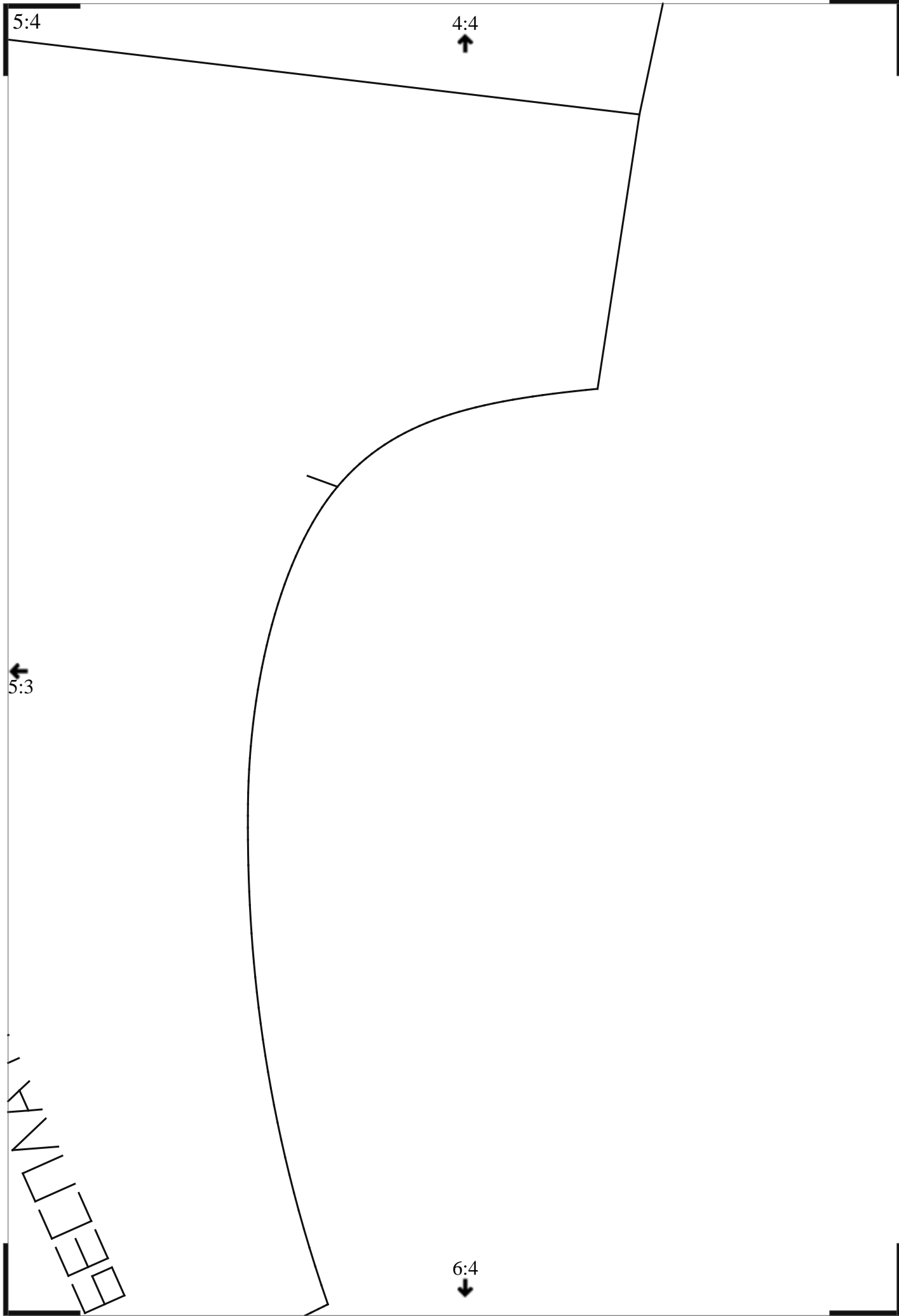
4:3  
↑

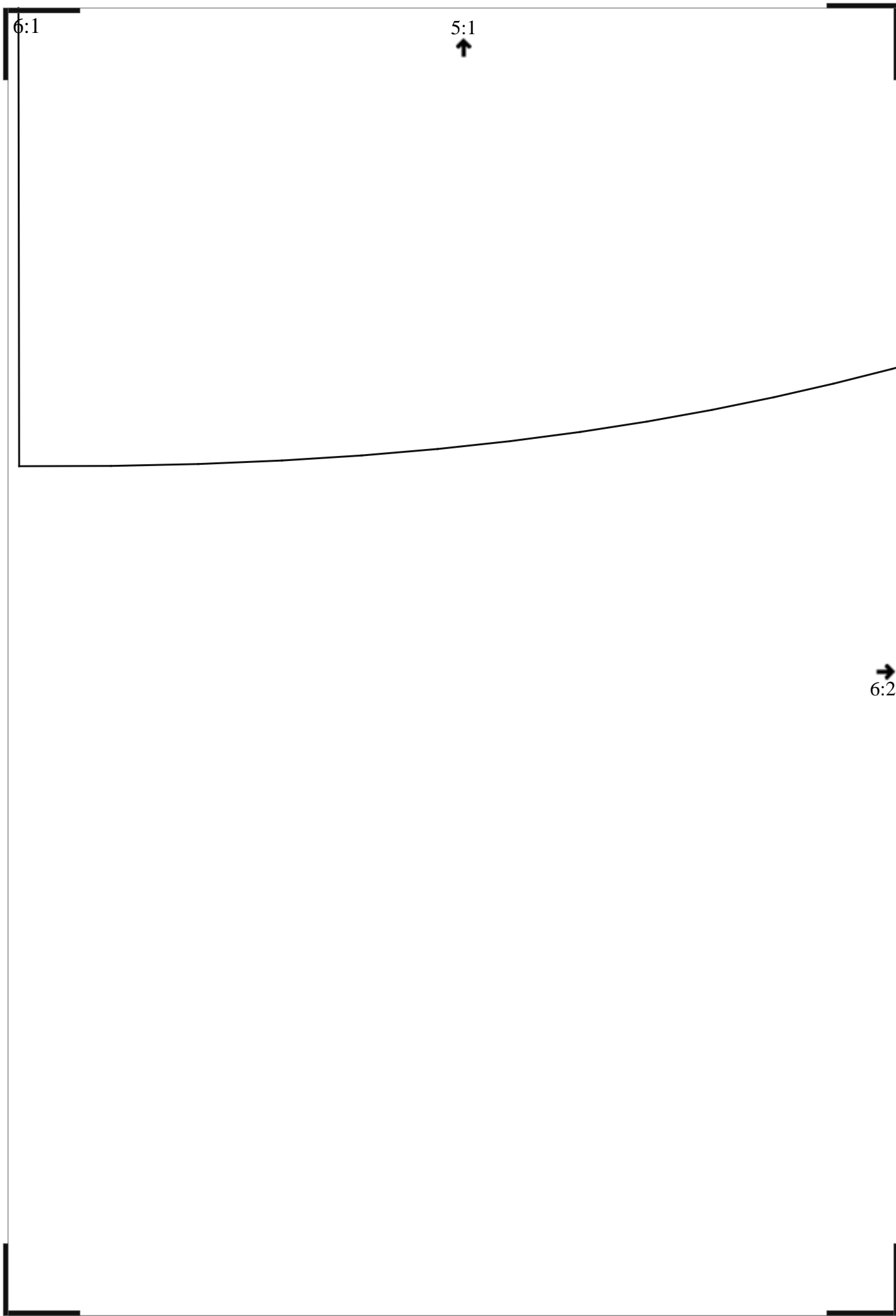
→  
5:4

6:3  
↓

THE BOOK OF NITRARIAN.COM



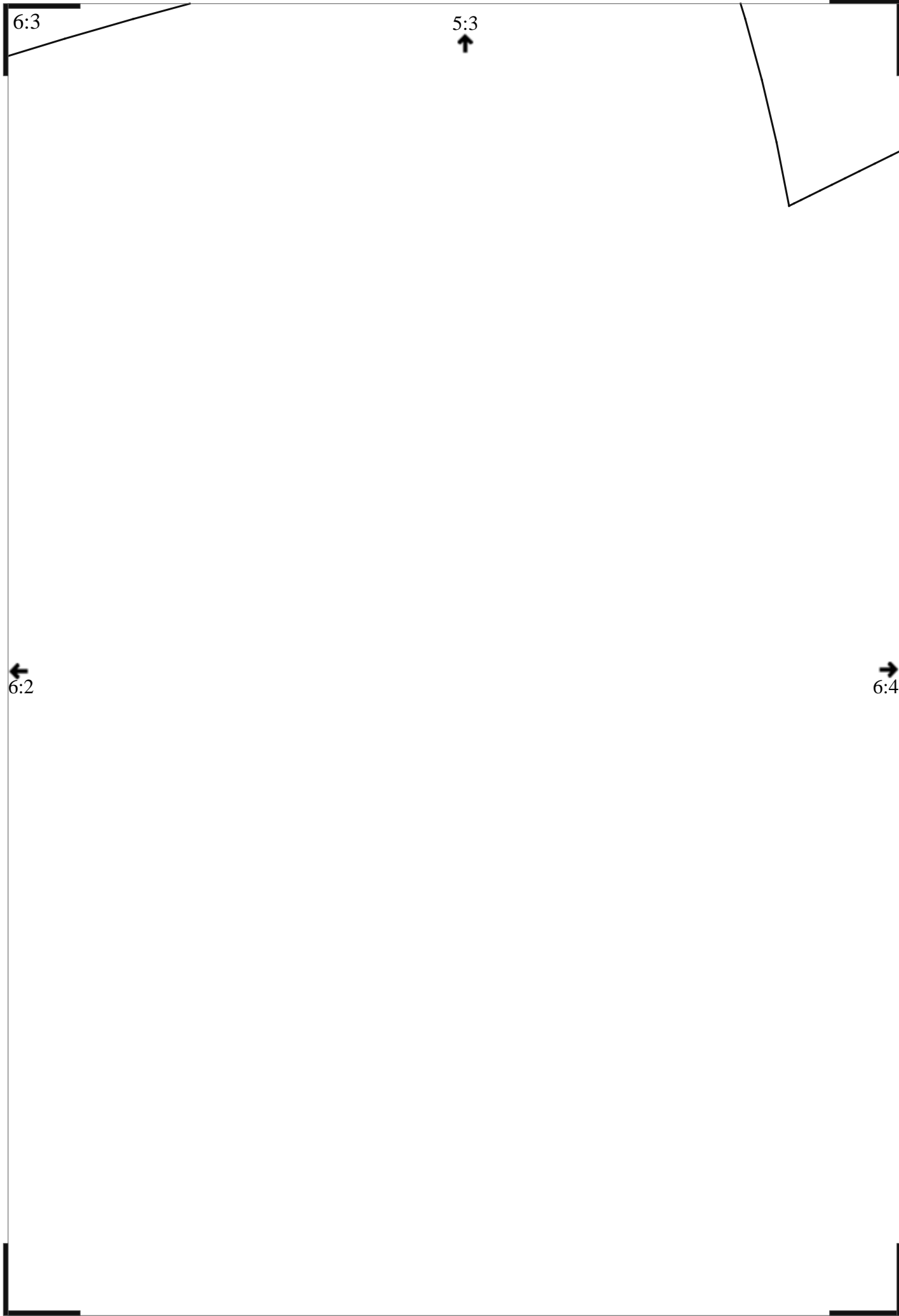




6:2

←  
6:1

→  
6:3



6:4

5:4



6:3